

SILVERIZED 100% FRESH

Clinical studies show that silver is effective against the bacteria that cause odours. Bacteria metabolise sweat and body moisture, emitting waste products that produce strong odours in a sleeping bag. The resultant odour is unpleasant. Silver ions destroy enzymes within the bacteria that are necessary for them to live. The bacteria die off without these enzymes.

DOWN BENEFITS AS FOLLOWS: REDUCTION OF UNPLEASANT SMELLS CAUSED BY BACTERIA.

This means that a treated sleeping bag doesn't smell, even after intensive use. Bacterial contamination is reduced by 98.5 %. This silverized down treatment dispenses with the need for two stages of chemical dipping, and so reduces the negative impact on the environment. Best of all: For the first time a down sleeping bag is a viable alternative for those suffering from dust allergies, where previously they had to rely on synthetic fillings.

SALEWA USES SILVERIZED TECHNOLOGY * BOTH FOR DOWN FILLINGS AND FOR SYNTHETIC FILLINGS AND PADDING MATERIAL.

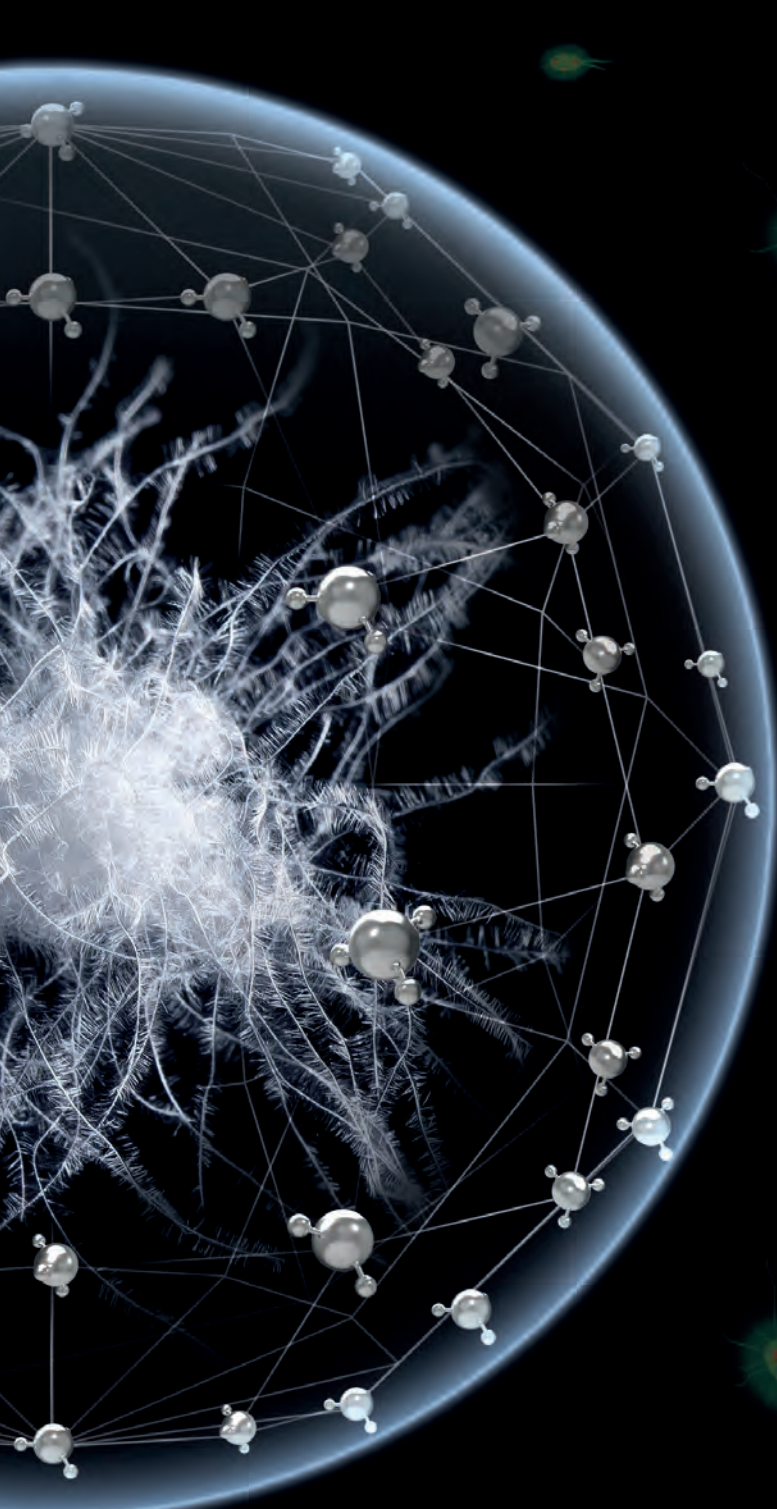


* Silverized Technology

chemical product

Further information at www.salewa.com

**SILVERIZED.
GENERAL PROTECTION FOR DOWN.**



REVOLUTIONARY: FRESH DOWN

In cooperation with the innovative Swiss company Schoeller Technologies, SALEWA has developed the world's first antibacterial silver treatment for down fillings.



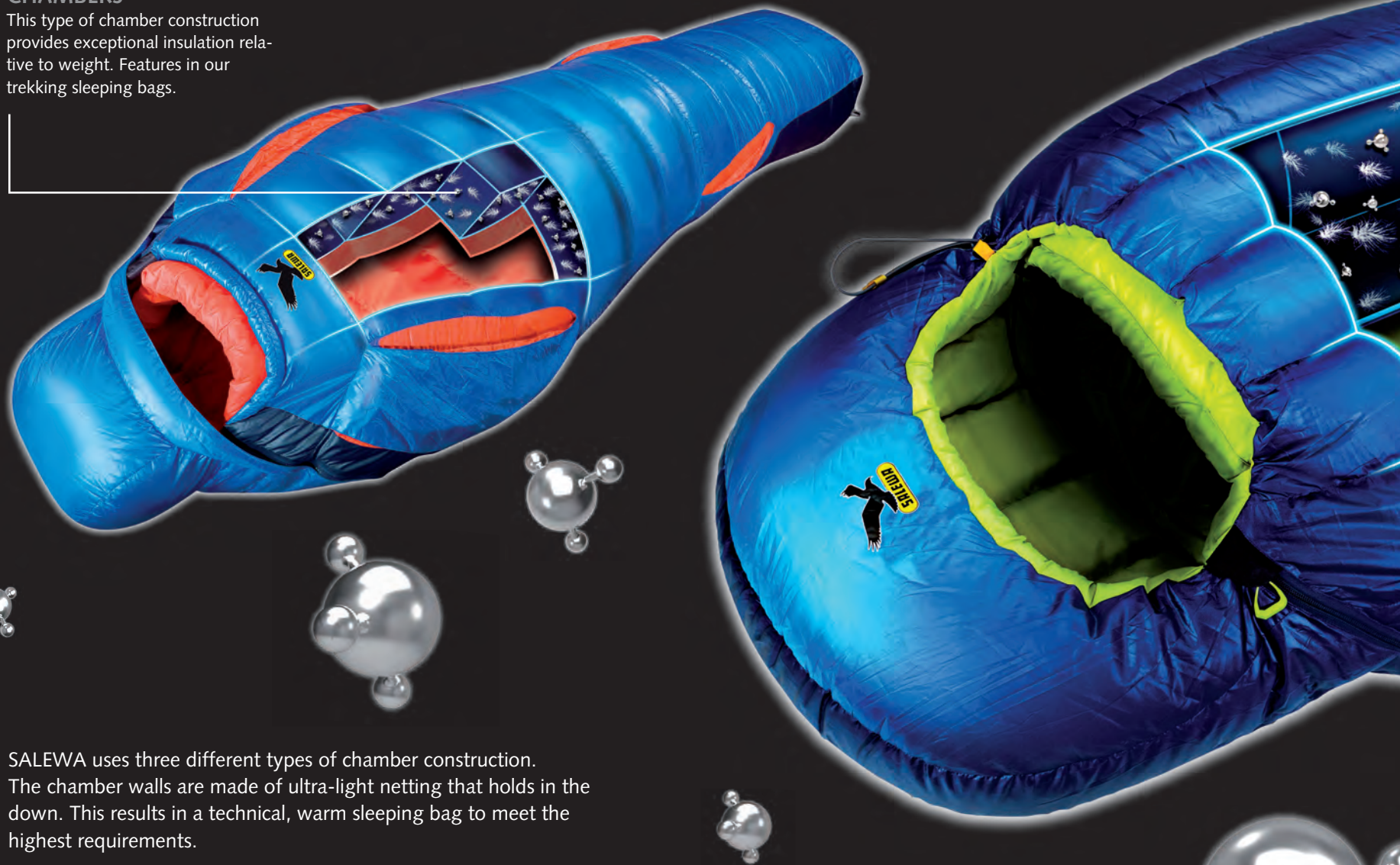
EVOLUTIONARY: 3D FLEX

3D Flex is the next stage of SALEWA's patented Flex design: We increased stretchability by 20%, reduced the weight of the technology, extended the flex zone to cover the shoulder and knee areas (Phantom Flex only), and gave the design more technical capability.

SILVERIZED INSIDE

PARALLELOGRAM CHAMBERS

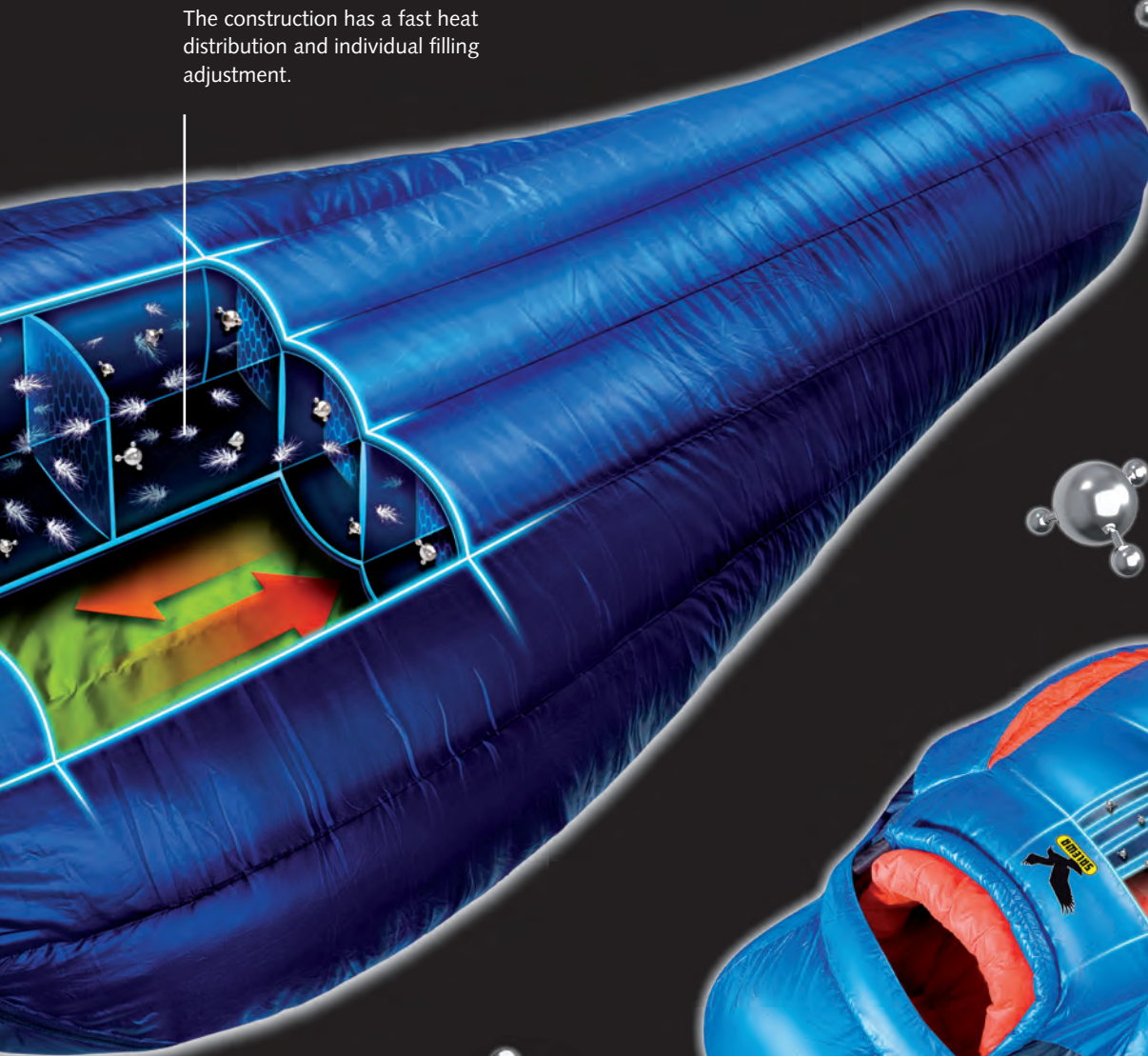
This type of chamber construction provides exceptional insulation relative to weight. Features in our trekking sleeping bags.



SALEWA uses three different types of chamber construction. The chamber walls are made of ultra-light netting that holds in the down. This results in a technical, warm sleeping bag to meet the highest requirements.

VERTICAL CHAMBERS

The construction has a fast heat distribution and individual filling adjustment.

**LAYER CONSTRUCTION**

The insulation is built up of several different PrimaLoft® layers arranged according to warmth and bonded together.

